

# MT625

TECHNICAL DATA SHEET

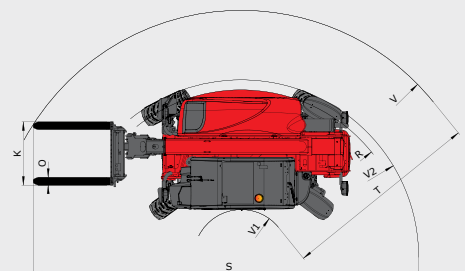
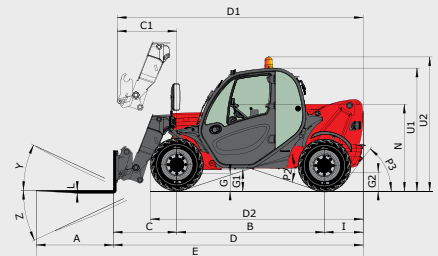
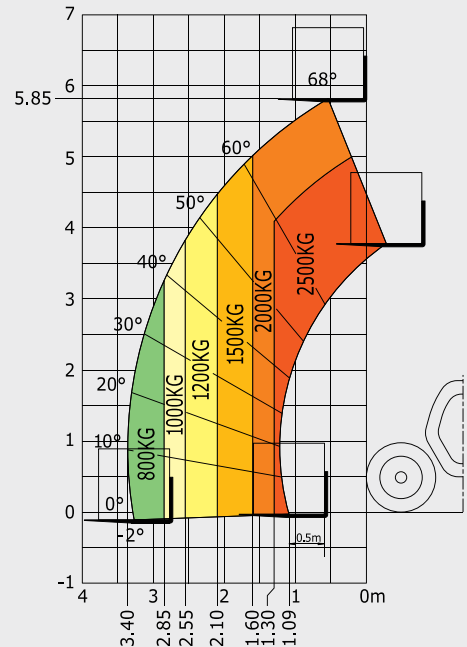


# MT625

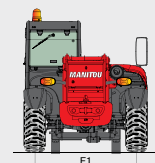
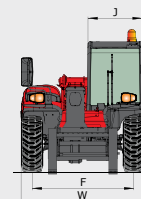
		MT 625
	<b>Lifting capacity</b> at 500 mm from forks heels	2500 kg
	Break-out force (ISO 8313)	3427 daN
	<b>Lifting height</b>	5.85 m
	<b>Time: laden/unladen (in secs)</b>	
	Lifting	8.00/8.00
	Lowering	5.40/5.30
	Extension	5.60/5.90
	Retraction	4.30/4.00
	Crowd	3.50
Dump	3.60	
	<b>Tyres</b>	12-16.5 12PR SKS CL TUBELESS
	<b>Forks (mm)</b>	
	Length x width x thickness	1200 x 125 x 45
	<b>Braking</b>	multiple-disk with oil bath
	<b>KUBOTA STAGE III A Engine</b>	V3307-DI-T-E3B
	Capacity	4 cyl. - 3331 cm <sup>3</sup>
	Power at 2,600 rpm	75 HP/55.4 kW
	Max. torque at 1400 rpm (ISO 3046-1)	265 Nm
	Injection	direct
	Cooling	water
	<b>Transmission</b>	hydrostatic
	Reversing shift	electro-hydraulic
	Number of gears (forward/reverse)	2/2
	Max. travel speed	25 kph
	<b>Hydraulics</b>	
	Gear pump	87.90 l/min - 235 bar
	<b>Capacities</b>	
	Cooling system	12 l
	Engine oil	11.2 l
	Hydraulic oil	115 l
	Fuel	63 l
	<b>Unladen weight (with forks)</b>	4710 kg
	<b>Width overall</b>	1.81 m
	<b>Height overall</b>	1.92 m
	<b>Length (at carriage)</b>	3.90 m
	<b>Turning radius (outer wheels)</b>	3.31 m
	<b>Ground clearance</b>	0.33 m
	<b>Drawbar pull</b>	4035 daN
	<b>Noise at driving position (LpA)</b>	75 dB
	<b>Environmental noise (LwA)</b>	104 dB
	<b>Vibration to whole hand/arm</b>	< 2.50 m/s <sup>2</sup>
	<b>Vibration on driver's body</b>	< 1.32 m/s <sup>2</sup>

## Maximum height reach: 0.66 m

As per standard EN 1459 annex B



mm	D2	I	P3	V1
A 1200	3275	603	52°	765
B 2300	E 5094	J 797	R 3150	V2 3310.5
C 991	F 1492	K 1015	S 6651.5	W 1813
C1 928	F1 1492	L 45	T 3935	Y 12°
D 3894	G 240	N 1314	U1 1920	Z 117°
D1 3831	G1 330	O 125	U2 2054	
	G2 253	P2 37°	V 4700	



This brochure describes versions and configuration options for Manitou products which may be fitted with different equipment. The equipment described in this brochure may be standard, optional or not available depending on version. MANITOU reserves the right to change the specifications shown and described at any time and without prior warning. The manufacturer is not liable for the specifications given. For more information, contact your Manitou dealer. Non-contractual document. Product descriptions may differ from actual products. List of specifications non-exhaustive. The logos and visual identity of the company are the property of Manitou and may not be used without authorisation. All rights reserved. The photos and diagrams contained in this brochure are provided for information only.  
MANITOU BF SA - Limited company with board of directors - Share capital: 39,547,824 euros - 857 802 508 RCS Nantes

